

SolarInvert Energy Solutions

What does a 15kw inverter mean



Overview

Power Capacity: 15kW refers to the maximum power capacity of the inverter, suitable for larger residential or commercial properties with three-phase electricity connections. What is a 15 kW inverter?

Power Capacity: 15kW refers to the maximum power capacity of the inverter, suitable for larger residential or commercial properties with three-phase electricity connections.

Can a kVA inverter power more than kW?

Because if you only look at kVA, you may think that the inverter can power more devices than it actually can. Meanwhile, if you only look at kW, you may buy an inverter with too small a kVA capacity, and the system will easily overload.

How many kW can a 10 kVA inverter handle?

If your inverter has a power factor of 0.9, then a 10 kVA inverter will deliver only 9 kW of real output. This means the inverter can only handle 10.2 kW of actual load—not 12. Understanding this gap helps avoid overspending on capacity or overloading your system. How does this apply to solar and hybrid inverter systems?

.

What is a 15kW hybrid inverter?

Optimized Energy Usage: A 15kW three-phase Hybrid Inverter allows for efficient utilization of solar energy, battery storage, and grid power, ensuring optimal energy usage based on demand and availability.

What is inverter kVA rating?

Inverter kVA rating measures the apparent power that an inverter can handle, expressed in kilovolt-amperes (kVA). It indicates the total capacity of electrical

power that can be delivered by the inverter, including the power used effectively (apparent power or kW) and the power lost or not used directly (reactive power).

Why should you choose a solar inverter rated in kW?

Inverters must handle peak solar input, battery charging, and load output—all at once. Choosing an inverter rated in kW (not just kVA) gives you a clearer view of real usable power. This prevents undersizing and keeps your solar-storage system running efficiently.

What does a 15kw inverter mean



Breaking Down kW in Solar System Sizes: 5kW, 8kW, ...

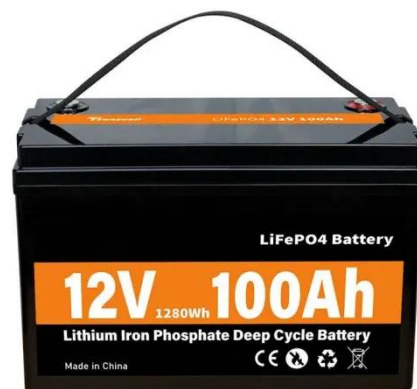
Curious about the differences between 5kW, 8kW, and 10kW solar systems? Learn about the kW in solar system sizes and how they can work for ...

[Get Price](#)

How to Read an Inverter's Digital Display , Power Home

The inverter is usually mounted on the side of the house where the other metering equipment is located and has a digital panel that allows you to ...

[Get Price](#)



kW, kWh and kilowatt/hour : What does it all mean?

Getting confused by the terms kW, kWh and kilowatt/hour? Discover what each term means. Learn when to use the correct version and why.

[Get Price](#)

What Size Solar Inverter Do You Need for Solar Panels?

When you install a solar system, picking the right size for your solar inverter is really important. You may have heard about making your solar system "oversizing" or "undersizing" than your ...

[Get Price](#)



How Much Power Does a 15kW Solar System Produce?

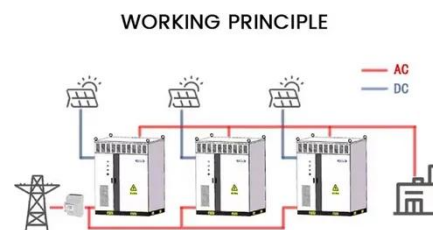
The article discusses the details of a 15kW solar power system, including its power generation, space requirements, and cost. It explains that a 15kW ...

[Get Price](#)

Inverter Specifications and Data Sheet

The article provides an overview of inverter functions, key specifications, and common features found in inverter systems, along with an example of power calculations and inverter ...

[Get Price](#)



What Is an Inverter: Inverter Ratings, Efficiency & More

An inverter converts solar panel energy into usable electricity, with ratings and efficiency being key factors for optimal performance.

[Get Price](#)



Understanding Solar Inverter Sizes: What Size Do You Need?

Solar inverter sizing is rated in watts (W). As a general rule of thumb, your solar inverter wattage should be about the same as your solar array's total capacity, within the ...

[Get Price](#)



What do the Watts on an Inverter Mean?

Watts is the unit used to measure the output power of an inverter. Watt (W) is the power unit in the International System of Units, representing ...

[Get Price](#)

Is a 15kW 3-phase inverter big enough?

Depending on the battery stack capacity (above/below 30 kWh), it does mean your ability to import from the grid to the battery and export from the battery to

the grid is limited to ...

[Get Price](#)



5kW Off-Grid Solar Inverter

What is a 5kW Off-Grid Solar Inverter?
Let's start with the basics. A 5kW off-grid solar inverter is a device that converts direct current (DC) from your solar panels into ...

[Get Price](#)



Understanding the Power of a 48 Volts 15kW Inverter: A ...

What is a 48 Volts 15kW Inverter? A 48 volts 15kW inverter is an electrical device that converts direct current (DC) electricity from batteries into alternating current (AC) ...

[Get Price](#)



A Complete Guide to Inverters/Variable Frequency ...

A good way to think of an inverter is like a car trying to maintain its speed by lightly pressing the accelerator instead of accelerating quickly and ...

[Get Price](#)


Solar Inverter Sizing to Improve Solar Panel Efficiency

Under-sizing Your Inverter Using the graph above as an example, under-sizing your inverter will mean that the maximum power output of your system (in kilowatts - kW) will ...

[Get Price](#)


Understanding Inverter Power Ratings: kW vs kVA Explained

What do kW and kVA mean in inverter specifications? kW refers to the real or usable power output of an inverter. kVA represents the total power capacity it can carry, including power lost ...

[Get Price](#)

What is the Inverter kVA Rating, and the Top 5 ...

In this article, you will get in-depth information about the kVA rating inverter, its application, the difference between KVA vs KW, the top 5 mistakes

to avoid ...

[Get Price](#)



What do the Watts on an Inverter Mean?

Watts is the unit used to measure the output power of an inverter. Watt (W) is the power unit in the International System of Units, representing the amount of energy converted ...

[Get Price](#)

Is a 15kW Solar System Enough to Power Your Entire ...

An off-grid setup needs a 15kW inverter, a battery bank, and charge controllers to store excess power. For example, in a fully off-grid 15kW ...

[Get Price](#)



15kW 3-Phase Hybrid Inverter: Is It Right for You?

Power Capacity: 15kW refers to the maximum power capacity of the inverter, suitable for larger residential or commercial properties with three-phase

electricity connections.

[Get Price](#)

- ☒ LIQUID/AIR COOLING
- ☒ INTELLIGENT INTEGRATION
- ☒ PROTECTION IP54/IP55
- ☒ BATTERY /6000 CYCLES



Understanding Inverter Power Ratings: kW vs kVA ...

What do kW and kVA mean in inverter specifications? kW refers to the real or usable power output of an inverter. kVA represents the total power capacity it ...

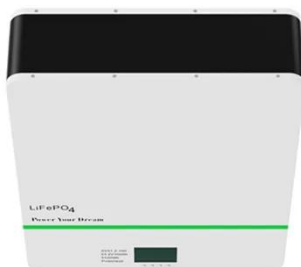
[Get Price](#)



Inverter Specifications and Data Sheet

The article provides an overview of inverter functions, key specifications, and common features found in inverter systems, along with an example of power ...

[Get Price](#)



What is the Inverter kVA Rating, and the Top 5 Mistakes to Avoid ...

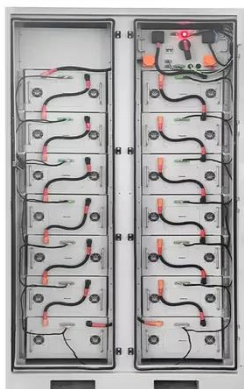
In this article, you will get in-depth information about the kVA rating inverter, its application, the difference between KVA vs KW, the top 5 mistakes

to avoid when selecting, and how to ...

[Get Price](#)



To Strive forward No Energy Waste



- ✓ All in one
- ✓ 100~215kWh High-capacity
- ✓ Intelligent Integration

How to read inverter data sheet in 5 easy steps-InkPV

Before you buying an off-grid solar power system, you might have question that don't know how to read the solar inverter data sheet, don't know if the solar ...

[Get Price](#)

How to Read Solar Inverter Display?

Delayed Updates: Slow response or outdated readings could mean communication problems with the system. What Should I Do If My Inverter Display Is Blank? If your inverter display is blank, ...

[Get Price](#)



How Much Power Does a 15kW Solar System Produce?

The article discusses the details of a 15kW solar power system, including its power generation, space requirements, and cost. It explains that a 15kW system

can generate 15,000 watts of ...

[Get Price](#)



15kW 3-Phase Hybrid Inverter: Is It Right for You?

Power Capacity: 15kW refers to the maximum power capacity of the inverter, suitable for larger residential or commercial properties with three ...

[Get Price](#)



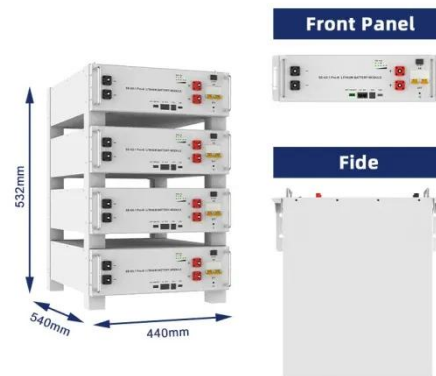
Is a 15kW Solar System Enough to Power Your Entire Home Off ...

An off-grid setup needs a 15kW inverter, a battery bank, and charge controllers to store excess power. For example, in a fully off-grid 15kW system, batteries are mandatory to ...

[Get Price](#)

15kW Solar Power System Facts & Information

15kW Solar Power System Facts & Information. Everything you ever wanted to know about this solar system size including production estimates.

[Get Price](#)

16kW Solar System Information - Facts & Figures

On This Page: How Much Energy Does a 16kW System Produce? How Much Space Will It Take Up? How Much Does a 16kW System Cost? How Much ...

[Get Price](#)

How to Read a Solar Inverter Display, Solar Power Monitoring Guide

Investing in a solar power system is a significant step toward sustainable energy use. To get the most out of your system, it's essential to understand how to read your solar inverter display. ...

[Get Price](#)

Contact Us

For catalog requests, pricing, or partnerships, please visit:
<https://www.barkingbubbles.co.za>