

SolarInvert Energy Solutions

What does an outdoor base station do



Overview

When you visit the Device Info for the Wyze Cam Outdoor, you'll see two things that only the Base Station provides: network status and signal strength. These tell you if the Wyze Cam Outdoor is online, and if the signal is strong or weak, which can help when troubleshooting the Wyze Cam Outdoor.

Without the Wyze Base Station, the camera's range would be limited to that of the local WiFi. Since the effective range of consumer-grade routers can vary, we wanted to make sure.

We've included a microSDport in the Base Station itself so that you can backup all local recordings (including time lapses) from your Wyze Cam Outdoor. Even if your camera is.

With the Wyze Cam Outdoor being outdoors, there's a greater risk of a grab and run. In case this happens, once you set up your Base Station and camera, they're officially bound to each other until manually deleted from the primary user's account. This means.

Besides acting as a connection point for the Wyze Cam Outdoor, you can use the Wyze Base Station in Travel Mode to connect to your camera without internet access. This lets you connect up to four (4) Wyze Cam Outdoor cameras to your Base Station at.

Does my Wyze Cam Outdoor need a base station?

Unlike other Wyze cameras, your Wyze Cam Outdoor must be connected to a Base Station to work. This article explains why. Without a Wyze Base Station, the camera's range would be limited to that of the local Wi-Fi. Since the effective range of consumer-grade routers can vary, we wanted to make sure that users had a consistent experience.

Why is a base station important?

A base station plays a pivotal role in the realm of telecommunications, acting as the cornerstone of connectivity. It enables seamless communication by linking various wireless devices to broader networks, ensuring that data flows efficiently from one point to another.

What is a base station?

It is a fixed location equipped with antennas and other equipment that receives and transmits radio signals to and from mobile devices, such as smartphones, tablets, and other wireless devices. Base stations are an essential component of cellular networks, providing coverage and connectivity to mobile devices within a specific area or cell.

What is a ring base station?

Central Hub for Ring Devices: The Ring Base Station serves as the central nervous system of your Ring security setup. It connects and manages all your Ring devices, acting as a communication hub that ensures seamless interaction between your cameras, doorbells, and sensors.

What is a ring camera base station?

In summary, the Ring Camera Base Station is a central hub that enhances the functionality and reliability of your Ring home security system by managing device communication, extending Wi-Fi coverage, providing emergency alerts, and ensuring continued operation during power outages. Do You Need a Base Station for Ring Cameras?

.

How to choose a base station?

Frequency: The base station should operate on a frequency that is compatible with the devices it will be communicating with. Common frequencies include 900 MHz, 1.8GHz, 2.1GHz, 2.4 GHz, 2.6GHz and 5 GHz ,etc. **3. Power:** The base station should have enough power to provide a strong and reliable signal.

What does an outdoor base station do



What are the benefits of using an Arlo SmartHub or Base Station?

Upgrade your Arlo setup with a SmartHub or Base Station. Experience secure connectivity, local storage, and continuous video recording for comprehensive surveillance.

[Get Price](#)

What Is A Base Station?

A base station is an integral component of wireless communication networks, serving as a central point that manages the transmission and reception of signals between ...

[Get Price](#)



Roku outdoor camera base : r/Roku

What is the purpose of the base that comes with the Roku outdoor camera system? Does it just act as a storage unit for recordings?

[Get Price](#)

r/wysecam on Reddit: Why do I need a base station if I will be

The base station is what connects your cam to the internet. Without it, you can't set the cam up. You also can't get software updates or person detection or cloud storage for your clips unless ...

[Get Price](#)



What Is A Base Station?

A base station is an integral component of wireless communication networks, serving as a central point that manages the transmission and ...

[Get Price](#)

Base station tether for outdoor cam

Unfortunately, because the OC communicates only with the base station, there is no way to extend the range even with an extender. You basically need to get the base closer to the cam ...

[Get Price](#)



Arlo Essential Outdoor Camera (2nd Generation) FAQ

What are the benefits of connecting my Arlo Essential Outdoor Camera (2nd Generation) to a SmartHub or Base Station? The Arlo SmartHub ...

[Get Price](#)

What is the purpose of the Base Station on the Wyze Outdoor ...

Does the Outdoor Cam Base Station extend the range of all Wyze cams, or only other Wyze Outdoor Cams?

[Get Price](#)

Is Wyze Base Station wired or wireless?

A wired connection ensures you have the most stable and reliable connection between your Wyze Base Station, Wyze Cam Outdoor, and router. To use your base station ...

[Get Price](#)

Xiaomi Outdoor Camera Base Station FAQ

1. Q: What cameras does the Xiaomi Outdoor Camera Base Station support?

A: The current models that are supported are listed below: Xiaomi

Outdoor Camera BW500 Xiaomi Outdoor

...

[Get Price](#)



Do Arlo Essential devices need a base station?

Quick answer: While the manufacturer recommends using a base station with all of its products, Arlo's Essential line does not need a base ...

[Get Price](#)

Do You Need A Base Station For Ring Cameras? 5 Must-Knows!

Having installed Ring cameras for added peace of mind, I'll explain the role of the base station and whether it's essential for your security setup. Let's simplify this topic and help ...

[Get Price](#)



How To Use The Wyze Cam Outdoor Base Station Without Ethernet Cable

Want to unplug your Base Station from your router? Once it's set up, you can use Wyze Base Station on a WiFi

connection - no need for a router. To do this: In the Wyze app, tap on your ...

[Get Price](#)



Solved: What does the base station do?

The Base sets up it's own wifi system to talk to the cameras only (no other devices can hook in) The mobile apps allow you to access and set the cameras, view live and ...

[Get Price](#)

ESS



114KWh ESS



ISO 9001 ISO 14001 PICC RoHS CE MSDS UN38.3 UK CA TEC

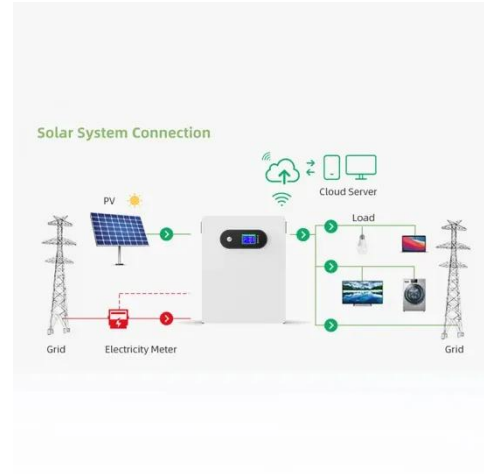
TetraFlex® Outdoor BS422

A world first The world's only outdoor base station featuring multiple technologies in one single core-connected system: TETRA, DMR Tier III, TEDS and Analog. This technology ...

[Get Price](#)

About the Wyze Base Station

With a long enough ethernet cable, you can place the Base Station farther out, like in a shed or barn, to give you more flexibility with placement. With the Wyze Cam Outdoor ...

[Get Price](#)


Understanding Wyze Outdoor Camera: Do You Need a Base Station?

This article delves deep into the Wyze Outdoor Camera's functionality, explaining what a base station is, its relevance, and how you can maximize your security setup without ...

[Get Price](#)

Understanding Wyze Outdoor Camera: Do You Need a Base ...

This article delves deep into the Wyze Outdoor Camera's functionality, explaining what a base station is, its relevance, and how you can maximize your security setup without ...

[Get Price](#)


How to set up your Roku Outdoor Camera SE

In addition to your Roku Outdoor Camera SE, base station, and included accessories, you will need the following:

Power: Your base station ...

[Get Price](#)



Wyze Cam Outdoor Base Station

This replacement base station unit is compatible with Wyze Cam Outdoor v1/v2. With 1 base station, you may pair up to 4 add-on cameras. Note: Cables are not included. You may find ...

[Get Price](#)



Outdoor cam . Why a base station?

The base station aids in making the battery last longer. More of the tasks are done on the base station to save battery life.

[Get Price](#)

Do all Wyze cameras need a base station? I'm getting a lot of

I'm getting a lot of conflicting info. I currently have one base station which is connected to two V3 cams and three outdoor cams. I read on Wyze app that

each base station can handle four ...

[Get Price](#)



Wyze Base Station Setup

The base station is a communication hub between the outdoor camera and your home network. You can consider it as an intermediary, it connects to your home network and ...

[Get Price](#)

Arlo Smarthub Vs Base Station: What's The ...

Overview of Arlo Smarthub and Base Station The Arlo Smarthub and Base Station are both devices used to improve home security systems. ...

[Get Price](#)



Set up you Outdoor Camera SE , Cameras

Your Base Station can support up to 4 Roku Outdoor Cameras. If you are adding an Outdoor Camera SE to an existing Roku Outdoor Camera system,



skip to ...

[Get Price](#)

Do You Need A Base Station For Ring Cameras? 5 ...

Having installed Ring cameras for added peace of mind, I'll explain the role of the base station and whether it's essential for your security setup. ...

[Get Price](#)



Contact Us

For catalog requests, pricing, or partnerships, please visit:
<https://www.barkingbubbles.co.za>