

SolarInvert Energy Solutions

What electricity does the factory power station use



Overview

An Electrical distribution system is necessary for every factory and industry. The distribution system distributes the electrical power through the internal factory feeders to the service terminal for the operation of multiple types of machinery.

Electric Power Distribution in a Factory mainly operates on higher voltage ranges than the normal operating ranges in households. High voltages like 11KV, 33KV.

The component of the power system is known as the distribution system which is responsible for distributing electricity for local use. A distribution system is typically.

Feeders – A feeder is a conductor which connects the distribution sub-station to the area where power is to be distributed. Because no tapings are taken from a.

Many power stations use diesel generators to power facilities with nuclear, natural gas, coal, hydro, or other sources of energy. These generators ensure a smooth flow of routine operations at power stations and act as a power backup during outages to keep the power stations running. How do electric power stations work?

Electric power stations use diesel-fueled generators for an internal combustion process that converts diesel's chemical energy into thermal energy to produce a mechanical action that generates electric power. Mostly diesel plants are used as supplementary or emergency sources of power rather than primary power sources.

What is a power plant & how does it work?

In its simplest form, a Power Plant, known also as a Power Station, is an industrial facility used to generate electricity. To generate power, an electrical power plant needs to have an energy source. One source of energy is from the burning of fossil fuels, such as coal, oil and natural gas. These fuels are burned in boilers to produce steam.

What is a power plant?

Gigantic energy factories, known as “Power Plants,” are industrial facilities that generate electricity on a large scale. Power stations, also referred to as generating plants, are usually attached to an electrical grid. They contain one or more generators and a rotating device that converts mechanical energy into electric energy.

What energy sources do power plants use?

The majority of power plants use fossil fuels like oil, natural gas, or coal to produce electric power. Other energy sources include hydropower, nuclear power, etc. The type of main energy source defines the power plant type. The uses of diesel backup generators differ based on the type of power plant. Let's learn about them in detail. 1.

What type of energy does a factory use?

Industry and manufacturing rely heavily on natural gas (30% of all energy consumed by the industrial sector in 2015), petroleum and other liquids (26%), and electricity (10%), with coal, renewables, and biofuels making up the rest. How do factories get their power?

.

How does a power plant make electricity?

A power plant is a big system that makes electricity. It takes energy from fuel (like gas, coal, or wind) and turns it into electrical power that we use in factories, homes, and everywhere.

What electricity does the factory power station use



Coal fired power plant

Figure 1. A coal fired power plant in England. [1] Note the two tall smoke stacks where the combustion products go into the atmosphere and the shorter, wider ...

[Get Price](#)

How much energy will new semiconductor factories ...

New semiconductor factories in the US could each use as much electricity as a town -- will they run on renewable energy? A new report ...

[Get Price](#)



How Much Electricity Does a Small Factory Use? A Comparative ...

This article aims to shed light on the power requirements of small factories, warehouses, and businesses, with a particular focus on the contexts of the United Kingdom and the United States.

[Get Price](#)



Power station Facts for Kids

A power station (also called a power plant) is a special place where electricity is made. Most power stations have big machines called generators. These ...

[Get Price](#)



How does a nuclear power plant generate electricity?

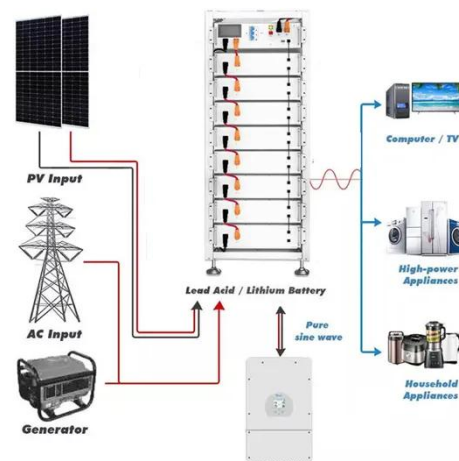
Nuclear power is one of the ways humans produce electricity. The term nuclear power refers to the source of this energy--the nucleus of atoms! Here's how it works. Inside a nuclear power ...

[Get Price](#)

Electricity explained Electricity generation, capacity, and sales in

Energy storage systems for electricity generation have negative-net generation because they use more energy to charge the storage system than the storage system ...

[Get Price](#)



Power Station

The Power Station is a large player built facility that produces power. It does not require power to function and can be upgraded to add more production options.

[Get Price](#)


What are the factory energy storage power stations?

There are various technologies employed in factory energy storage power stations, each with distinct advantages and intended applications. The ...

[Get Price](#)
LPW48V100H
48.0V or 51.2V


Huntly Power Station

The Huntly Power Station is the largest thermal power station in New Zealand and is located in the town of Huntly in the Waikato. It is operated by Genesis ...

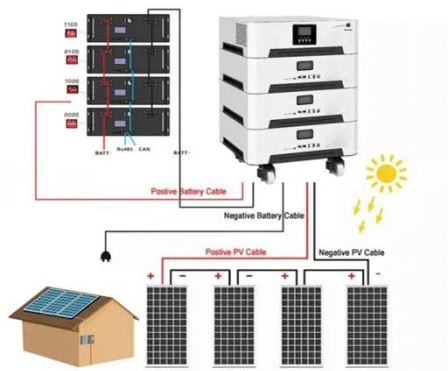
[Get Price](#)

Power

Most buildings require electricity, or power, to function. Power is produced in power generators (see below), stored or discharged from Power Storages, ...

[Get Price](#)





Delivery to consumers

The electric power grid Electricity is generated at power plants and moves through a complex system, sometimes called the grid. The grid includes electricity substations, ...

[Get Price](#)

Electricity for Manufacturing

How Much Electricity Does a Manufacturing Company Use?
Manufacturing facilities use 95.1 kilowatt-hours (kWh) of electricity and ...

[Get Price](#)



Business Energy Advisor , Manufacturing Facilities

Process heating, drivepower, cogeneration, and boiler use generally consume the most energy in manufacturing facilities regardless of ...

[Get Price](#)



Industrial power plants

Make an investment in your independence - and ensure a reliable and flexible power supply for your processes. Electricity and heating are major cost factors for industrial plants.

That means ...

[Get Price](#)



What are the factory energy storage power stations? , NenPower

There are various technologies employed in factory energy storage power stations, each with distinct advantages and intended applications. The most prevalent method involves ...

[Get Price](#)

How Does a Coal Power Plant Work?

Thermal-based power plants can produce electricity from coal or other fuel sources. The coal-fired process requires three different steps to turn energy released from burning coal to generating ...



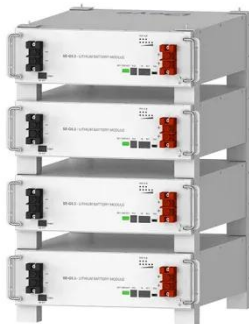
[Get Price](#)

How Generators in Power Stations Work

Hydroelectric power stations use the kinetic energy of falling water to generate electrical energy. Some hydroelectric power stations use water

...

[Get Price](#)



Deye Official Store

10 years
warranty

Business Energy Advisor , Manufacturing Facilities

Process heating, drivepower, cogeneration, and boiler use generally consume the most energy in manufacturing facilities regardless of subsector. As a whole, manufacturing ...

[Get Price](#)



Power Plant Generators: What It Is? How Does It Work?

In this guide, we'll walk you through the role of power plant generators, their importance, and how a generator functions as a secondary source of electric energy in various ...

[Get Price](#)

Frequently Asked Questions (FAQs)

How much electricity does a power plant generate? The amount of electricity that a power plant generates depends on its electricity generation capacity and on the amount of time the ...

[Get Price](#)


Outdoor Cabinet BESS
50 kWh/500 kWh Battery Storage System
Industrial and Commercial Energy Storage



- All In One**
Integrating battery packs
- High-capacity**
50-500kWh
- Degree of Protection**
IP54
- Operating Temperature Range**
-20~60°C (Derating above 50 °C)
- Intelligent Integration**
Integrated photovoltaic storage cabinet
- Rated AC Power**
50-100kW
- Altitude**
3000m(>3000m derating)

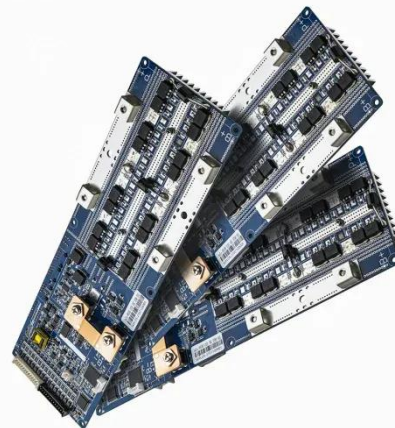
Power Plant Basics: Types, Components, and How ...

In its simplest form, a Power Plant, known also as a Power Station, is an industrial facility used to generate electricity. To generate power, an ...

[Get Price](#)

How much power do large industrial facilities use? Have any of ...

Each ASML EUV tool uses about 1 MW of electricity. A typical super fab will have 10 of them. That's 10 MW for just one process in a set of hundreds. I wouldn't be surprised if the big ...

[Get Price](#)


Electricity in factories

Electric Power Distribution in a Factory mainly operates on higher voltage ranges than the normal operating ranges in households. High voltages like 11KV, 33KV, 66KV, or 132KV from the ...

[Get Price](#)


Power Plant Guide: Type, Function, and Steam Process

Learn about power plant types, core functions, and how the steam process drives electricity generation in modern energy systems.

[Get Price](#)


2MW / 5MWh
Customizable

What type of energy does a factory use?

Industry and manufacturing rely heavily on natural gas (30% of all energy consumed by the industrial sector in 2015), petroleum and other liquids (26%), and electricity ...

[Get Price](#)

How much power do large industrial facilities use? Have any of ...

Each ASML EUV tool uses about 1 MW of electricity. A typical super fab will have 10 of them. That's 10 MW for just one process in a set of hundreds. I wouldn't

be surprised if ...

[Get Price](#)



Electricity for Manufacturing

How Much Electricity Does a Manufacturing Company Use?
Manufacturing facilities use 95.1 kilowatt-hours (kWh) of electricity and 536,500 Btu of natural gas per square ...

[Get Price](#)

Power Plant Generators: What It Is? How Does It Work?

In this guide, we'll walk you through the role of power plant generators, their importance, and how a generator functions as a secondary ...

[Get Price](#)



Contact Us

For catalog requests, pricing, or partnerships, please visit:
<https://www.barkingbubbles.co.za>