

SolarInvert Energy Solutions

What is smart base station communication equipment



Overview

Smart BaseStation™ is an intelligent communication mast that can provide remote power for a range of DC and AC off-grid applications eg rural broadband. What is a base station in telecommunications?

In telecommunications, a base station is a fixed transceiver that is the main communication point for one or more wireless mobile client devices. A base station serves as a central connection point for a wireless device to communicate.

What is a base station in a wireless network?

At the heart of wireless communication networks are base stations, which act as the gateway between wireless devices and the network infrastructure. Base stations are responsible for transmitting and receiving data to and from wireless devices, as well as managing network resources and ensuring reliable and efficient communication.

How does a wireless device communicate with a base station?

When a wireless device, such as a mobile phone, communicates with a base station, the device sends a signal to the base station, which converts the signal into digital form and sends it to the network. Similarly, when the network sends data to the device, the base station converts the digital data into a wireless signal that the device can receive.

What does a base station do?

Base stations are responsible for transmitting and receiving data to and from wireless devices, as well as managing network resources and ensuring reliable and efficient communication. The basic function of a base station is to convert wireless signals into digital signals that can be transmitted over a wired network infrastructure.

What is a Base Transceiver Station (BTS)?

A base transceiver station (BTS) or a baseband unit (BBU) is a piece of equipment that facilitates wireless communication between user equipment (UE) and a network. UEs are devices like mobile phones (handsets), WLL phones, computers with wireless Internet connectivity, or antennas mounted on buildings or telecommunication towers.

Why are base stations important for modern telecommunications?

In summary, base stations are critical for modern telecommunications as they serve as the link between mobile devices and the extensive network infrastructure that spans the globe. The strategic deployment and ongoing improvement of these stations are essential for maintaining global connectivity.

What is smart base station communication equipment

What Is A Base Station?



A base station is a piece of equipment that facilitates wireless communication between devices and a network. It contains the necessary ...

[Get Price](#)

Land Mobile Radio Systems - Frequently Asked ...

Land mobile radio (LMR) refers to wireless communications systems that enable two-way radio communication for mobile users. LMR systems operate on ...



[Get Price](#)

Types and Applications of Mobile Communication ...

Mobile communication base station is a form of radio station, which refers to a radio transceiver station that transmits information between mobile ...



[Get Price](#)

Securing UAV Flying Base Station for Mobile Networking: A ...

A flying base station based on an unmanned aerial vehicle (UAV) uses its mobility to extend its connectivity coverage and improve its communication channel quality to achieve ...

[Get Price](#)



Base transceiver station

Though the term BTS can be applicable to any of the wireless communication standards, it is generally associated with mobile communication technologies like GSM and CDMA. In this ...

[Get Price](#)

GSM

The MS consists of the physical equipment, such as the radio transceiver, display and digital signal processors, and the SIM card. It provides the air interface to the user in GSM networks.

[Get Price](#)



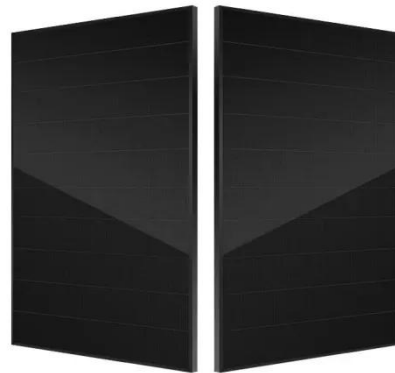
Aerial base station

An Aerial base station (ABS), also known as unmanned aerial vehicle (UAV)-mounted base station (BS), is a flying antenna system that works as a hub between the backhaul network ...

[Get Price](#)


Equipment for Your Ham Radio Station

Essential Equipment for a Ham Radio Station Setting up a ham radio station requires a few essential pieces of equipment. In this section, we will discuss the three main components: ...

[Get Price](#)


BS (Base Station)

Base stations are a critical component of modern wireless communication networks, providing the interface between wireless devices and the network infrastructure.

[Get Price](#)

Radio Base Stations for Secure Communication

In the world of radio communications, a radio base station plays a vital role in ensuring reliable and seamless communication across a wide area.

Whether used in mobile networks, ...

[Get Price](#)



Ground Control Stations (GCS) for Drones and UAVs

Ground control stations (GCS) enable seamless command and control for UAVs in diverse applications. From beyond visual line of sight ...

[Get Price](#)

What is a base station and how are 4G/5G base ...

What is a base station and how are 4G/5G base stations different? Base station is a stationary trans-receiver that serves as the primary hub for ...

[Get Price](#)



What is a Base Station in Telecommunications?

What is a Base Station? A base station is a critical component in a telecommunications network. A fixed transceiver that acts as the central

communication hub for one or more wireless mobile ...

[Get Price](#)



Multi-objective cooperative optimization of communication base station

Recently, 5G communication base stations have steadily evolved into a key developing load in the distribution network. During the operation process, scientific dispatching ...

[Get Price](#)



The Base Station in Wireless Communications: The Key to ...

Equipped with an electromagnetic wave antenna, often placed on a tall mast, the base station enables communication between mobile terminals (such as mobile phones or ...

[Get Price](#)



What Is A Base Station?

A base station is a piece of equipment that facilitates wireless communication between devices and a network. It contains the necessary hardware and

software to transmit ...

[Get Price](#)



What is a base station and how are 4G/5G base stations different?

What is a base station and how are 4G/5G base stations different? Base station is a stationary trans-receiver that serves as the primary hub for connectivity of wireless device

[Get Price](#)

Smart BaseStation

Smart BaseStation(TM) is an intelligent communication mast that can provide remote power for a range of DC and AC off-grid applications eg rural broadband.

[Get Price](#)



Mobile communication base station , Shanghai Warner Telecom ...

The mobile communication base station refers to radio wireless transmission between mobile communication switching center and telephone terminal.



The base station plays an important ...

[Get Price](#)

IoT Glossary: Base Station Controller Explained

At its core, a base station is a radio receiver equipped with one or multiple antennas. Originally introduced in mobile telecommunication networks, the base station has ...



[Get Price](#)



Basic components of a 5G base station

The 5G base station is composed of a power supply system and communication equipment [4], in addition to some auxiliary equipment such as air ...

[Get Price](#)

Guide for the Selection of Communication Equipment for ...

A communication system is made up of devices that employ one of two communication methods (wireless or wired), different types of equipment

(portable radios, mobile radios, base/fixed ...

[Get Price](#)



Base Stations and Cell Towers: The Pillars of Mobile Connectivity

It consists of electronic equipment, including transceivers, antennas, and signal processors, that manage the communication within a specific geographical area or "cell."

[Get Price](#)

Cell site

A cell tower in Peristeri, Greece A cell site, cell phone tower, cell base tower, or cellular base station is a cellular-enabled mobile device site where antennas ...

[Get Price](#)



What is a base station?

A base station serves as a central connection point for a wireless device to communicate. It further connects the device to other networks or devices, usually through ...

[Get Price](#)


Base Stations and Cell Towers: The Pillars of Mobile ...

It consists of electronic equipment, including transceivers, antennas, and signal processors, that manage the communication within a ...

[Get Price](#)


Base Stations

Base stations form a key part of modern wireless communication networks because they offer some crucial advantages, such as wide coverage, continuous communications and ...

[Get Price](#)

The Base Station in Wireless Communications: The ...

Equipped with an electromagnetic wave antenna, often placed on a tall mast, the base station enables communication between mobile terminals ...

[Get Price](#)

Contact Us

For catalog requests, pricing, or partnerships, please visit:
<https://www.barkingbubbles.co.za>