

SolarInvert Energy Solutions

**What is the maximum power of
a 12v high power inverter**



Overview

Match the inverter's continuous wattage rating to the battery's discharge capacity. For a 12V 200Ah battery (2.4kWh), a 2000W inverter is ideal. Formula: Inverter Wattage \leq (Battery Voltage \times Ah Rating \times 0.8). Factor in surge power needs but prioritize sustained loads. How much power does a 12 volt inverter use?

There is a simple method to calculate how much power your inverter is using: For 12-volt inverters, divide the connected load by 10; for 24-volt inverters, divide by 20. Example: How much does an inverter consume with a 400 W load connected?

For a 12 V inverter such as a Mass Sine 12/1200, consumption will be $400/10 = \text{approx. } 40 \text{ amps}$.

How much power does an inverter use?

An inverter uses a small amount of energy during the conversion process. The difference between the input power and the output power is expressed in percentages. The efficiency of modern inverters is more than 92 %. This means that a maximum of 8 % of the power consumption is used to convert battery voltage to 230V/50Hz.

What are inverter specifications?

Specifications provide the values of operating parameters for a given inverter. Common specifications are discussed below. Some or all of the specifications usually appear on the inverter data sheet. Maximum AC output power This is the maximum power the inverter can supply to a load on a steady basis at a specified output voltage.

What is the maximum current drawn by a 1500 watt inverter?

The maximum current drawn by a 1500-watt inverter is influenced by the following factors: Maximum Amp Draw for 85%, 95% and 100% Inverter Efficiency A. 85% Efficiency Let us consider a 12 V battery bank where the

lowest battery voltage before cut-off is 10 volts. The maximum current is.

How much battery does a 24 volt inverter use?

For 24-volt inverters, it is 10 %. The battery capacity for a 12-volt Mass Sine 12/1200, for instance, is 240 Ah, while a 24-volt Mass Sine 24/1500 inverter would require at least 150 Ah. The indicated battery capacity is only for the inverter. The capacity required for other loads should be added to it. How much power does an inverter consume?

.

Can a Mastervolt inverter power a laptop?

In fact, the output voltage from an inverter is often better than that from the electricity grid or shore power. This is why Mastervolt inverters, combined with a battery charger and a battery set, are often used as a back-up system in places where the grid connection is unreliable. Laptops can also be powered by a Mastervolt inverter.

What is the maximum power of a 12v high power inverter



What is the difference between rated power and peak ...

The rated output power of inverter is the continuous output power, which refers to the output power of the inverter under the rated voltage ...

[Get Price](#)

Peak power of Victron Inverters

I am really interested to see test and real data from Victron proving that these inverters reach peak power. Therefore, I do not recommend to design any system taking the peak power into ...

[Get Price](#)



The Only Inverter Size Chart You'll Ever Need

We have created a comprehensive inverter size chart to help you select the correct inverter to power your appliances.

[Get Price](#)

Inverter Specifications and Data Sheet

There is a simple method to calculate how much power your inverter is using:
For 12-volt inverters, divide the connected load by 10; for 24-volt inverters, divide by 20.

[Get Price](#)



How Big of an Inverter Can My Car Handle: Explained ...

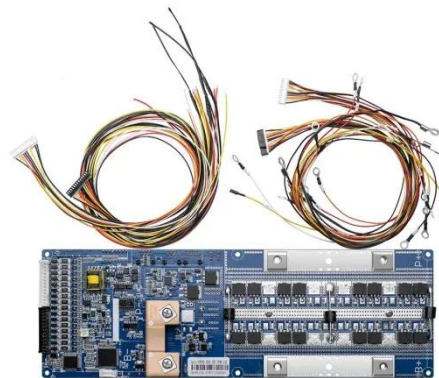
How Big of an Inverter Can My Car Handle: Understanding Your Car's Electrical System To determine the maximum size of an inverter that ...

[Get Price](#)

How to Calculate the Maximum Output Power of a Power Inverter

In this article, we go over how to calculate the maximum output power of a power inverter from the DC battery supplying it.

[Get Price](#)



CHENGSI 1200 Watt Pure Sine Wave Power Inverter DC 12V to ...

Buy CHENGSI 1200 Watt Pure Sine Wave Power Inverter DC 12V to AC 220V Converter, for Home, RV, Truck, Off-Grid Solar Power Inverter, Maximum Power

Output of 12000W at ...

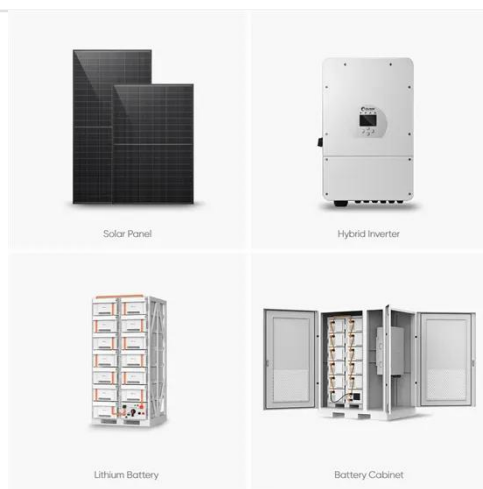
[Get Price](#)



How Big of an Inverter Can My Car Battery Handle?

Typically, a 12-volt car battery can support an inverter with a power range of about 150 watts to 1500 watts. Please note, however, that car batteries are not suitable for driving ...

[Get Price](#)



Inverter Amp Draw Calculator

It determines how many devices you can power and how long your inverter can function. In this article, let's explore the inverter amp draw ...

[Get Price](#)

Best High Capacity Inverter [Updated: August 2025]

It delivers up to 5000W continuous power and 6 outlets, including USB and Type-C ports, perfect for charging multiple devices at once. Its efficiency of

up to 88% keeps energy ...

[Get Price](#)



PMX 1000W-PSW Inverter

Features Inverts 12V DC to 120V AC
Maximum continuous Output Power 1000 Watt Meets 120V AC electronic appliance safety operating standard. It can be ...

[Get Price](#)

Can you install a 3000 watt power inverter on a prius?

Unlike a traditional non-hybrid vehicle, the Prius uses a DC-DC converter (different from the inverter for traction motor (s), and different than the inverter ...

[Get Price](#)



Best inverters for home: Top power backup options for reliable ...

Luminous Zelio+ 1100 pure sinewave inverter is a reliable power backup solution for your home, office, or shop. With a robust 900VA/12V capacity, it

LFP12V100


seamlessly supports a 12V battery (80 Ah ...

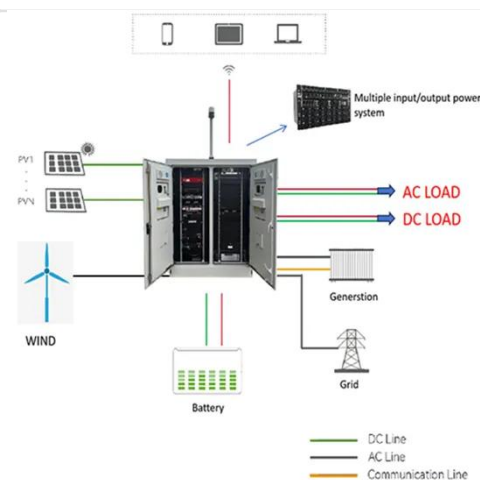
[Get Price](#)



The Best Power Inverters for Your Car

The best power inverters for your car give you the power to quick charge phones and run bigger accessories. Find out more about the best ...

[Get Price](#)



12 Volt DC Power Inverter: In-Depth Learning and ...

Discover how a 12-volt DC power inverter works, its applications, and how to choose the best one, Topbull inverters, for reliable and safe power ...

[Get Price](#)



Inverter Amp Draw Calculator

It determines how many devices you can power and how long your inverter can function. In this article, let's explore the inverter amp draw calculator for 1000W, 1200W, and ...

[Get Price](#)

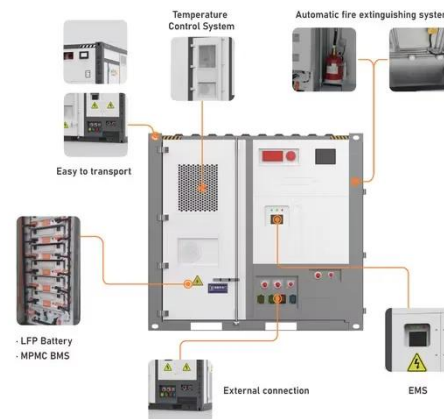

What size inverter can you run off a car battery?

A 2000W inverter at 12V draws over 160 amps continuously, far exceeding standard automotive battery safe current ratings. Operating such a heavy load results in rapid ...

[Get Price](#)

Inverter Calculator

In order to ensure that the capacity of your power inverter is sufficient to meet the required start up load, you must first determine the power consumption of the ...

[Get Price](#)


What does a power inverter do, and what can I use one for?

The inverter draws its power from a 12 Volt battery (preferably deep-cycle), or several batteries wired in parallel. The battery will need to be recharged as the



power is drawn out of it by the ...

[Get Price](#)

How Many Amps Does a 2000W Inverter Draw?

How to Calculate Inverter Amp Usage
The following calculations assume you have a high quality inverter that can draw maximum power. If not, we ...

[Get Price](#)



Inverter Specifications and Data Sheet

This is also known as the surge power; it is the maximum power that an inverter can supply for a short time. For example, some appliances with electric motors require a much higher power on ...

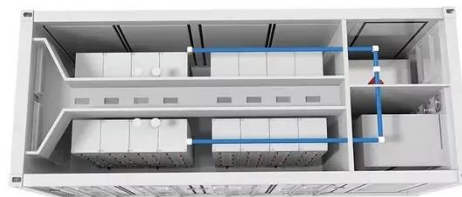
[Get Price](#)

Inverter Specifications and Data Sheet

The article provides an overview of inverter functions, key specifications, and common features found in inverter systems, along with an example of

power ...

[Get Price](#)



Can an Inverter Be Too Big for Your Battery System?

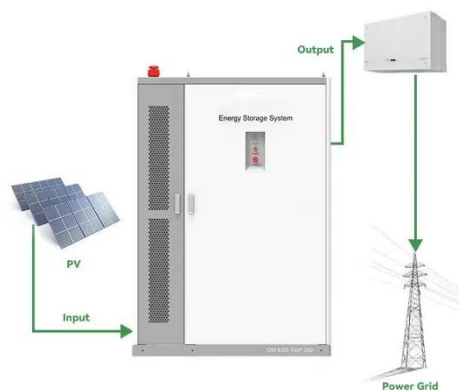
For a 12V 200Ah battery (2.4kWh), a 2000W inverter is ideal. Formula: Inverter Wattage \leq (Battery Voltage \times Ah Rating \times 0.8). Factor in surge power needs but prioritize sustained ...

[Get Price](#)

Inverter Calculator

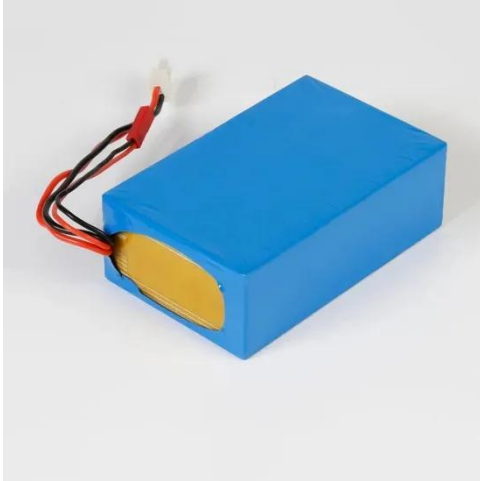
In order to ensure that the capacity of your power inverter is sufficient to meet the required start up load, you must first determine the power consumption of the equipment or appliance you plan ...

[Get Price](#)



How Big of an Inverter Can My Car Battery Handle?

Typically, a 12-volt car battery can support an inverter with a power range of about 150 watts to 1500 watts. Please note, however, that car ...

[Get Price](#)

Frequently asked questions about inverters , Mastervolt

There is a simple method to calculate how much power your inverter is using:
For 12-volt inverters, divide the connected load by 10; for 24-volt inverters, divide by 20.

[Get Price](#)

Contact Us

For catalog requests, pricing, or partnerships, please visit:
<https://www.barkingbubbles.co.za>