

## SolarInvert Energy Solutions

# What is the normal voltage of Angola lithium battery pack



## Overview

---

How do I choose a lithium-ion battery pack?

When selecting a lithium-ion battery pack, understanding its voltage characteristics is crucial for ensuring optimal performance and longevity. Three key voltage terms define a battery's operation: Nominal Voltage, Charged Voltage, and Cut-Off Voltage.

What is the voltage of a lithium ion battery?

Common lithium-ion cells typically have a nominal voltage of about 3.6 to 3.7 volts. This range is standard for most consumer applications, including smartphones and laptops. The actual voltage can vary slightly based on the specific chemistry and design of the cell. Most lithium-ion batteries consist of multiple cells connected in series.

What is the nominal voltage for a 3s Li-ion battery pack?

For a 3S Li-ion battery pack (three cells in series), the nominal voltage would be 10.8V ( $3.6V \times 3$ ). 2. Charged Voltage: The Maximum Voltage When Fully Charged What Is Charged Voltage?

Charged voltage (also called full-charge voltage) is the highest voltage a cell reaches when fully charged.

What is the nominal voltage of a battery pack?

This value is commonly used to specify battery packs and serves as a general reference for comparing different battery chemistries. For a 3S Li-ion battery pack (three cells in series), the nominal voltage would be 10.8V ( $3.6V \times 3$ ). 2. Charged Voltage: The Maximum Voltage When Fully Charged What Is Charged Voltage?

.

What is the nominal voltage of a Li-ion battery?

It represents a balance between the battery being fully charged and fully discharged. This value is commonly used to specify battery packs and serves as a general reference for comparing different battery chemistries. For a 3S Li-ion battery pack (three cells in series), the nominal voltage would be 10.8V ( $3.6V \times 3$ ).

What is a fully charged lithium ion battery?

A fully charged lithium-ion battery typically measures between 4.1V and 4.2V per cell. This voltage range represents 100% state of charge (SOC), and it's the maximum safe limit for most standard lithium-ion chemistries. Charging beyond this level risks battery damage or safety hazards.

## What is the normal voltage of Angola lithium battery pack

---



### How to Test Lithium Ion Battery with Multimeter

Learn how to test a lithium-ion battery using a multimeter for voltage, current, and overall health in simple steps.

[Get Price](#)

---

### Lithium LiFePO4 Battery Voltage Charts For 12V, ...

48V Lithium Battery Voltage Chart (3rd Chart). Here we see that the 48V LiFePO4 battery state of charge ranges between 57.6V (100% charging ...

[Get Price](#)



### What You Need to Know About Battery Voltage

Battery voltage is the electrical potential difference between its terminals, indicating how much energy is available to power devices. Understanding battery voltage is essential for ...

[Get Price](#)

---

### Lithium-Ion Battery Voltage Breakdown: 12V, 24V, 48V

## Explained

Discover how lithium-ion battery voltage varies at different charge levels and learn how 12V, 24V, and 48V batteries perform across applications.

[Get Price](#)



✓ IP65/IP55 OUTDOOR CABINET

✓ WATERPROOF OUTDOOR CABINET

✓ 42U/27U

✓ OUTDOOR BATTERY CABINET

## LITHIUM BATTERIES 101

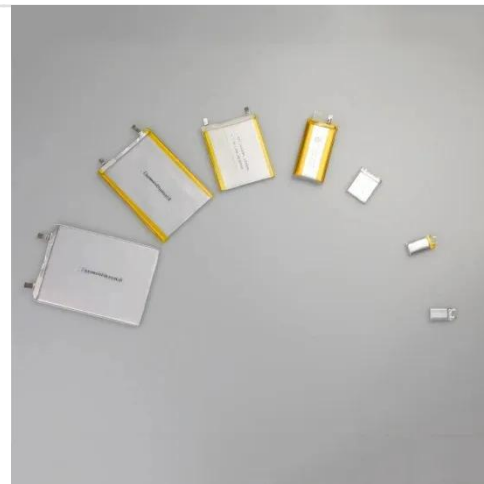
The average nominal (CCV) and low - high OCV voltage range of various lithium-ion cell chemistry are: NMC =had a nominal CCV of 3.6Vn/cell and an open circuit voltage range of ...

[Get Price](#)

## Lithium-Ion Battery Voltage Chart

Understanding lithium-ion battery voltage is essential for safe usage, maximizing performance, and prolonging battery life. A fully charged cell reads around 4.2V, while a dead one drops to ...

[Get Price](#)



## What Should Battery Pack Voltage Be When Fully Charged?

For most common battery types, such as lead-acid and lithium-ion, fully charged voltages vary: lead-acid batteries typically read 12.6V to 12.8V, while



lithium-ion batteries can ...

[Get Price](#)

## How to choose Angola lithium battery pack

Before making a purchase, think about these points: All lithium Polymer cells have a nominal voltage of 3.7v per cell. When fully charged a LiPo cell should be 4.2v and when discharged it ...

[Get Price](#)



Voltage range: 691.2-947.2V

>6000 cycles(100%DOD)

Rated battery capacity: 216KWH (customizable)

EMS communications: 4G/CAN/RS485

## LiFePO4 Battery Voltage Chart

LiFePO4 battery voltage varies depending on charge level, temperature, and load conditions. Understanding its voltage chart is crucial for maintaining efficiency, safety, and ...

[Get Price](#)

## 48V Battery Full Charge Voltage Chart: What Matters?

The 48V Battery Full Charge Voltage Chart provides a comprehensive overview of the optimal voltage levels for fully charging a 48-volt battery

system. Serving as a vital ...

[Get Price](#)



48V 100Ah



## What is Lithium Battery Nominal Voltage?

Nominal voltage is basically the standard voltage that a lithium battery is designed to operate at during normal use. For most lithium-ion batteries, this is around 3.7V. Knowing ...

[Get Price](#)

## LiFePO4 Battery Pack: 2025 Technical Parameters Guide

Discover 21 key technical parameters of LiFePO4 battery packs in this 2025 beginner-friendly guide. Learn voltage, capacity, BMS, and more for solar and EV applications.

[Get Price](#)



## Understanding Lithium Battery Voltage: Ranges, ...

Lithium batteries have become a critical part of our daily lives, powering everything from cell phones to electric vehicles. Given their ...



[Get Price](#)

## Battery Pack Calculator , Good Calculators

Here's a useful battery pack calculator for calculating the parameters of battery packs, including lithium-ion batteries. Use it to know the voltage, capacity, energy, and maximum discharge ...

[Get Price](#)

## Lithium Battery Voltage Chart

Choosing the right voltage is crucial, as an incorrect voltage can damage the device or result in suboptimal performance. The voltage of lithium batteries ...

[Get Price](#)

## Lithium Battery Voltage Chart

Choosing the right voltage is crucial, as an incorrect voltage can damage the device or result in suboptimal performance. The voltage of lithium batteries typically ranges from 3.2 to 3.7



volts ...

[Get Price](#)



## What Is Lithium Cell Voltage? Explained Simply

Learn what lithium cell voltage means, key ranges (Li-ion, LiFePO4), and how it impacts battery performance & safety.

[Get Price](#)

## Lithium-Ion Battery Voltage: How Many Volts And Types ...

The standard voltage of a lithium-ion battery typically ranges from 3.0 to 4.2 volts per cell. This voltage range is crucial for the battery's performance and longevity.

[Get Price](#)



## What is the Voltage of a 12-Volt Lithium-Ion Battery ...

According to industry standards and manufacturer recommendations, a healthy, fully charged 12V lithium-ion battery pack should ...

---

[Get Price](#)

---

### **Battery Voltage Explained: Nominal, Charged, Minimum, and Cut ...**

Nominal voltage is roughly the average voltage at which a battery operates under normal conditions. It represents a balance between the battery being fully charged and fully ...

[Get Price](#)

### **Comprehensive Guide on 3s lipo Battery & its ...**

The 3S lipo battery is a lithium polymer battery for RC uses and electronics. The 3S is a battery pack with three series of connected cells. The overall voltage ...

[Get Price](#)

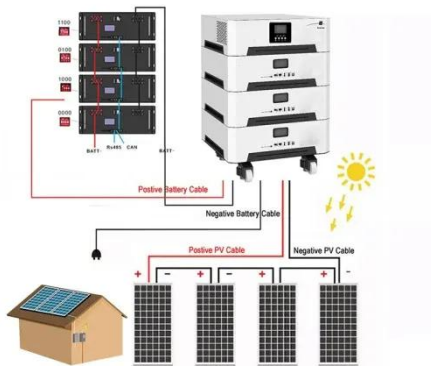
---

### **Lithium Battery SOC (State of Charge) Chart: A ...**

SOC (State of Charge) is a core parameter in lithium battery management, directly impacting battery performance and lifespan. This article

provides ...

[Get Price](#)



### What is the Voltage of a 12-Volt Lithium-Ion Battery When Fully ...

According to industry standards and manufacturer recommendations, a healthy, fully charged 12V lithium-ion battery pack should have a voltage between 12.6V and 12.8V.

[Get Price](#)

### Custom Battery Pack Voltage: Comprehensive Guide ...

Voltage: the unsung hero in custom battery pack assembly. It's the driving force behind your devices' power. Let's explore its critical role in battery design.

[Get Price](#)



## Contact Us

For catalog requests, pricing, or partnerships, please visit:  
<https://www.barkingbubbles.co.za>