

SolarInvert Energy Solutions

What size inverter is suitable for a 48v battery



Overview

To recharge your battery from time to time you would need the right size solar panel to do the job! Read the below article to find out the suitable solar panel size for your battery bank .

Note!The battery size will be based on running your inverter at its full capacity
Assumptions 1. Modified sine wave inverter efficiency: 85% 2. Pure sine wave inverter efficiency:90% 3. Lithium Battery:100% Depth of discharge limit 4. lead-acid.

To calculate the battery capacity for your inverter use this formula Inverter capacity (W)*Runtime (hrs)/solar system voltage = Battery Size*1.15 Multiply the result by 2 for lead-acid type.

You would need around 24v150Ah Lithium or 24v 300Ah Lead-acid Batteryto run a 3000-watt inverter for 1 hour at its full capacity .

Here's a battery size chart for any size inverter with 1 hour of load runtime
Note! The input voltage of the inverter should match the battery voltage. (For example 12v battery for 12v.

What is the recommended battery size for an inverter?

Interpreting Results: Once you input the required data, the calculator will generate the recommended battery size in ampere-hours (Ah). For instance, if your power consumption is 500 watts, the usage time is 4 hours, and the inverter efficiency is 90%, the calculator might suggest a battery size of approximately 222 Ah.

What is the calculate battery size for inverter calculator?

The Calculate Battery Size for Inverter Calculator helps you determine the optimal battery capacity needed to support your inverter system. By inputting critical parameters such as power consumption, inverter efficiency, and desired usage time, this calculator provides a precise battery size recommendation tailored to your specific needs.

What voltage should a 12V inverter run on?

The input voltage of the inverter should match the battery voltage. (For example 12v battery for 12v inverter, 24v battery for 24v inverter and 48v battery for 48v inverter)

Summary What Will An Inverter Run & For How Long?

.

How much battery should a 500 watt inverter use?

For instance, if your power consumption is 500 watts, the usage time is 4 hours, and the inverter efficiency is 90%, the calculator might suggest a battery size of approximately 222 Ah. Practical Tips: Ensure all input values are accurate to avoid skewed results.

How much power does an inverter use?

Consider the case of Alex, who is setting up a home office reliant on an inverter system. Alex needs to ensure uninterrupted power for his computer (200W) and lighting (50W) for 5 hours. Using the calculator, Alex inputs a total power consumption of 250W, a usage time of 5 hours, and an inverter efficiency of 90%.

How much battery do I need to run a 3000-watt inverter?

You would need around 24v 150Ah Lithium or 24v 300Ah Lead-acid Battery to run a 3000-watt inverter for 1 hour at its full capacity Here's a battery size chart for any size inverter with 1 hour of load runtime Note! The input voltage of the inverter should match the battery voltage.

What size inverter is suitable for a 48v battery



How to Size an Inverter for a 48V 300Ah (14.4kWh) System - ...

Sizing an inverter for a 48V 300Ah system, which equates to a total capacity of 14.4kWh, involves understanding both the power requirements of your appliances and the efficiency of the ...

[Get Price](#)

How Many Batteries Do I Need for a 5000W Inverter

With four 210ah 48V batteries, the inverter receives 104ah hourly. With a full discharge the inverter can run at maximum load for two hours or 10kwh (10,000W). Bottom line: no matter ...



[Get Price](#)



Calculate Battery Size for Inverter Calculator

Estimate the battery capacity required for your inverter based on power load, runtime, and efficiency. Using the Calculate Battery Size for Inverter Calculator can ...

[Get Price](#)

What Size Inverter for 100Ah

Battery

? Free Diagrams:

<https://cleversolarpower /free-diagrams/>

? My Best-Selling book on Amazon:

<https://cleversolarpower /off-grid-solar-power-simplified>

[Get Price](#)

48V 100Ah



Choosing the Right Battery for a 500-Watt Inverter

An inverter is an electronic device that converts direct current (DC) into alternating current (AC), commonly used for home backup power, camping, marine activities, and ...

[Get Price](#)

any favorite inverters for 48v battery bank?

You can get a Reliable brand 1500W, 48v inverter for \$162 and a Victron 100/20 48v MPPT for \$166. That's the closest to your dream deal I can get. I'd like to get 2.5kw - 3kw for ...

[Get Price](#)



Sizing the Right Inverter for 100ah Battery

In this guide, I will walk you through the process of sizing the right inverter for a 100ah battery along with an inverter size chart.

[Get Price](#)

What Size Inverter Do I Need?

Whether you're looking for what size inverter is best for your house or something as simple as an inverter for power your TV, the proper size will be a

...

[Get Price](#)

The Only Battery Size Chart You'll Ever Need

This article will help you understand the different battery sizes and provide you with a complete battery size chart.

[Get Price](#)

Wire Sizing Chart for 12V, 24V, and 48V DC Systems ...

Information on wire sizing and a universal AWG/mm² wire sizing chart to help in designing a 12V, 24V, or 48V DC renewable energy system.

[Get Price](#)


How Do You Calculate the Appropriate Inverter Size for a 48V ...

To calculate the appropriate inverter size for a 48V battery system, you need to determine the total wattage of the devices you plan to power. The formula is: Inverter Size ...

[Get Price](#)

How to Size a Battery? Battery Bank Capacity Size ...

Keep in mind that batteries are always rated in Ah. If you are not OK with the manual calculations, you may use the battery bank size calculator right after ...

[Get Price](#)


48V Inverter Solar Setup: Step-by-Step Connection

Setting up a solar system for a 48V inverter has its own advantages, suitable for medium and large-scale solar power

systems.

[Get Price](#)



Which Inverter Is Best for a 200Ah Battery?

Choosing the best inverter for a 200Ah battery depends on several factors, including power requirements, efficiency, and specific use cases. A suitable inverter will ...

[Get Price](#)



Recommended Inverter Cable, Breaker & Fuse Sizing

Use this table to decide what size and to use with your inverter. Remember the fuse and breaker are there to protect your cabling from overheating (and ...

[Get Price](#)

What Size Inverter Can I Run Off a 200Ah Battery?

When determining what size inverter can be run off a 200Ah battery, it's essential to consider both the power requirements of your devices and the characteristics of

the battery itself. A typical ...

[Get Price](#)



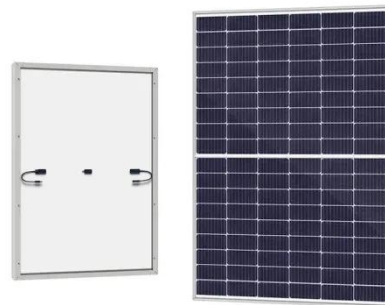
How Many Batteries for a 3000 watt Inverter? [Diagrams]

Can I run a 3000 watt inverter on one battery? You can but it's not recommended because you will reduce the battery lifespan, or the BMS will ...

[Get Price](#)

Understanding Battery Capacity and Inverter Compatibility

A 500VA inverter would be suitable, offering a balance between performance and battery life. For extended run times, consider larger inverters or additional batteries to meet ...



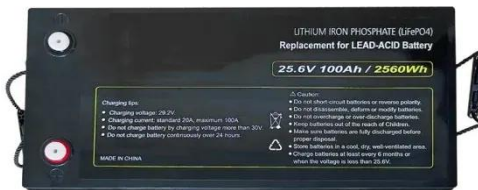
[Get Price](#)

What Inverter Do I Need for a 48V Battery?

To safely and efficiently use a 48V lithium battery, choose a 48V-rated pure sine wave or hybrid inverter, sized to your daily load, and compatible with CAN

or ...

[Get Price](#)



What size inverter do you need for a 100ah battery?

What size inverter for a 100Ah battery?
For appliances that use a relatively low amount of power, such as laptops, lights, TVs, and small fridges, ...

[Get Price](#)



What Size Solar Panel is Best for a 48V Solar ...

Component Compatibility: Many modern inverters, battery banks, and charge controllers are designed for 48V, streamlining installation. A ...

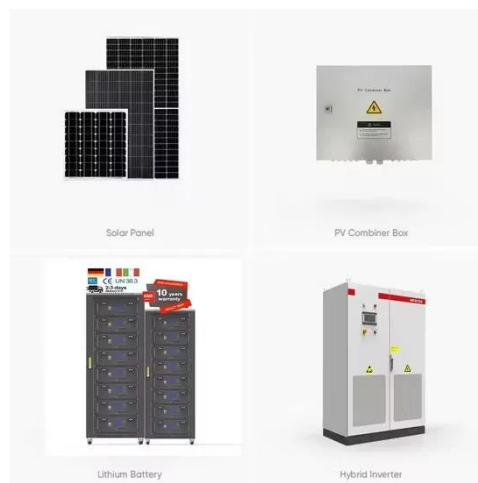
[Get Price](#)

What size inverter can a 48V 100Ah LiFePO4 battery ...

A 48V 100Ah LiFePO4 battery could support inverters in the range of 3000W to 5000W, depending on the specific battery's discharge capabilities and the

...

[Get Price](#)



What size inverter can a 48V 100Ah LiFePO4 battery support?

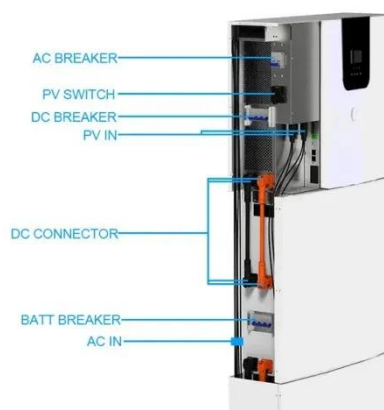
A 48V 100Ah LiFePO4 battery could support inverters in the range of 3000W to 5000W, depending on the specific battery's discharge capabilities and the types of loads you intend to ...

[Get Price](#)

Recommended Inverter Cable, Breaker & Fuse Sizing

Use this table to decide what size and to use with your inverter. Remember the fuse and breaker are there to protect your cabling from overheating (and potentially catching fire). You can use ...

[Get Price](#)



What Size Inverter Do I Need?

Whether you're looking for what size inverter is best for your house or something as simple as an inverter for power your TV, the proper size will be a measurement based on the typical

INTEGRATED DESIGN

EASY TO TRANSPORT AND INSTALL,
FLEXIBLE DEPLOYMENT



power ...

[Get Price](#)

What Inverter Do I Need for a 48V Battery?

To safely and efficiently use a 48V lithium battery, choose a 48V-rated pure sine wave or hybrid inverter, sized to your daily load, and compatible with CAN or RS485 BMS communication.



[Get Price](#)

How Do You Calculate the Appropriate Inverter Size for a 48V Battery

To calculate the appropriate inverter size for a 48V battery system, you need to determine the total wattage of the devices you plan to power. The formula is: Inverter Size ...



[Get Price](#)

Calculate Battery Size For Any Size Inverter (Using Our Calculator)

To recharge your battery from time to time you would need the right size solar panel to do the job! Read the below

article to find out the suitable solar panel size for your battery bank

[Get Price](#)



Battery Bank Size Calculations

Battery Bank Size Calculations Leading Edge has a wide range of 12V DC solar panels suitable for 12V, 24V and 48V battery banks.

[Get Price](#)

Contact Us

For catalog requests, pricing, or partnerships, please visit:
<https://www.barkingbubbles.co.za>