

## SolarInvert Energy Solutions

# What size inverter should I use with a 12V 50A lithium battery



**Deye Official Store**

**10** years  
warranty

## Overview

---

To recharge your battery from time to time you would need the right size solar panel to do the job! Read the below article to find out the suitable solar panel size for your battery bank.

What voltage should a 12V inverter run on?

The input voltage of the inverter should match the battery voltage. (For example 12v battery for 12v inverter, 24v battery for 24v inverter and 48v battery for 48v inverter Summary What Will An Inverter Run & For How Long?

.

What is the recommended battery size for an inverter?

Interpreting Results: Once you input the required data, the calculator will generate the recommended battery size in ampere-hours (Ah). For instance, if your power consumption is 500 watts, the usage time is 4 hours, and the inverter efficiency is 90%, the calculator might suggest a battery size of approximately 222 Ah.

Can a lithium battery run a large inverter?

Bottom line, if you want to run large inverter loads above 1000w on a lithium battery, make sure you choose an lithium battery that is designed for larger inverters or a system that can be paralleled safely with active balancing between the connected batteries.

Why should you use the calculate battery size for inverter calculator?

Using the Calculate Battery Size for Inverter Calculator can significantly streamline your power management process. This tool is particularly beneficial in scenarios where precise power estimation is critical, such as designing renewable energy systems, ensuring backup power in off-grid locations, or optimizing battery usage for cost efficiency.

How much battery should a 500 watt inverter use?

For instance, if your power consumption is 500 watts, the usage time is 4 hours, and the inverter efficiency is 90%, the calculator might suggest a battery size of approximately 222 Ah. Practical Tips: Ensure all input values are accurate to avoid skewed results.

How much battery do I need to run a 3000-watt inverter?

You would need around 24v 150Ah Lithium or 24v 300Ah Lead-acid Battery to run a 3000-watt inverter for 1 hour at its full capacity Here's a battery size chart for any size inverter with 1 hour of load runtime Note! The input voltage of the inverter should match the battery voltage.

## What size inverter should I use with a 12V 50A lithium battery



### How Long Will 12v Battery Run a Refrigerator?

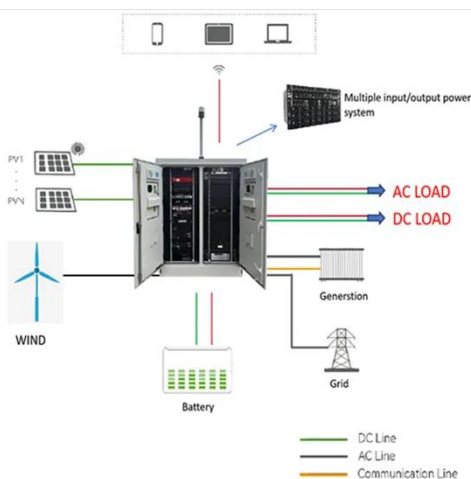
Need a simple solution? use the calculator given below to figure out how long will a 12v deep cycle battery or a car battery run your RV ...

[Get Price](#)

### What Size Inverter Do I Need?

Finding the proper inverter size for your needs is as simple as adding together the necessary wattages of the items that you're looking to power.

[Get Price](#)



### Lithium-Iron Phosphate Battery 12 Volt 50Ah , Renogy Solar

No more heavy lifting! Upgrade to Renogy's 12V 50Ah LiFePO4 Battery. Weighing in at a bit over 14 lbs, this battery can easily be carried and stored, and works perfectly as a portable power ...

[Get Price](#)

### Batteries vs Inverter size

Have you considered wiring them in series to reduce the current draw. You could use a 24 to 12 DC to DC converter for your 12 volt loads. I would certainly suggest 2s2p 24 ...

[Get Price](#)



### **How many batteries to run a refrigerator? A quick but ...**

The exact size of the battery bank that you would need will depend on the size of the refrigerator and the amount of energy that it consumes. For ...

[Get Price](#)

### **400W Solar Panel Kit (DIY): What Size Battery, ...**

In this guide, you'll learn, how many batteries, What size charge controller, what size inverter & what size cable you'll need for a 400-watt solar ...

[Get Price](#)



### **What Size Battery Do I Need for a 1000W Inverter?**

To power a 1000W inverter, you typically need a battery with a minimum capacity of 100Ah if you plan to run it for about one hour. However, the actual size may

vary based on ...

[Get Price](#)



### Fuse rate and cable sizing

Components Used: 1 x 370 W, 24 v,  
Mono Solar Panels by Jinko ( [Link](#) ) Smart  
Solar 100,30 MPPT by Victron ( [link](#) )  
Orion tr DC-DC 30A Isolated by Victron ( [link](#) ) 4 x REPT ...

[Get Price](#)



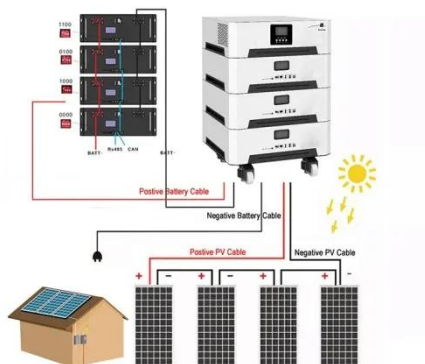
### Lithium Batteries: What Size Inverter Can I Use?

Bottom line, if you want to run large inverter loads above 1000w on a lithium battery, make sure you choose an lithium battery that is designed for larger inverters or a system that can be ...

[Get Price](#)

### Battery fuse sizing

I feel a 3000 watt inverter is a bit much for a 12 volt system, and to use the full 3000 watts, need a 24 volt system. IMO if you have a very short run of 4/0 wire to the battery and ...

[Get Price](#)


## 12V Wire Size Calculator + Chart: What Size Wire ...

To not get the size of the 12V cable wrong, you can use two key resources further on: 12V Cable Size Calculator. This calculator estimates the minimum ...

[Get Price](#)

## LiTime 12V 50Ah Lithium Battery - LiTime-CA

LiTime 12V 50Ah LiFePO4 Lithium Battery, RV, Fish Finder, it's ideal for home back up system such as security devices, and outdoor activities like fishing, camping, trailer.

[Get Price](#)


## The Only Inverter Size Chart You'll Ever Need

We have created a comprehensive inverter size chart to help you select the correct inverter to power your appliances.

[Get Price](#)

## The Only Inverter Size Chart You'll Ever Need

During our research, we discovered that most inverters range in size from 300 watts up to over 3000 watts. In this article, we guide you ...

[Get Price](#)

## Lithium Batteries: What Size Inverter Can I Use?

Bottom line, if you want to run large inverter loads above 1000w on a lithium battery, make sure you choose an lithium battery that is designed for larger ...

[Get Price](#)

## Battery Charger Size Chart (Buyers guide)

Suppose you have a 12V charger rated at 50A, and you want to charge a 12V 100Ah AGM battery. Given the recommended charging current ...

[Get Price](#)

### How Do You Choose the Right Inverter Size for Your Specific ...

Matching the inverter size to a 200Ah lithium battery is crucial for optimal performance and efficiency. An appropriately sized inverter ensures that it can handle the ...

[Get Price](#)

### Can an Inverter Be Too Big for Your Battery System?

Match the inverter's continuous wattage rating to the battery's discharge capacity. For a 12V 200Ah battery (2.4kWh), a 2000W inverter is ideal. Formula: Inverter Wattage  $\leq$  (Battery ...

[Get Price](#)

### Batteries vs Inverter size

I have two 12v 100ah lifepo4 batteries in parallel (50a max thru the BMS) which I want to use for an inverter. Most of the stuff in my van is 12v, but I'm thinking of

AC to run ...

[Get Price](#)



## How Long Will A 12 Volt Battery Run A Fan? (A Short Guide)

Battery Capacity (Ah) Battery DoD limit  
Fan wattage consumption Inverter efficiency  
How Long Will A 12 Volt Battery Run A Fan? in short, a 12v 70Ah lead-acid battery (with a ...

[Get Price](#)



## What size inverter can I use with my lithium battery?

What size inverter can I use with my lithium battery? Setec Customer Support 2 years ago Updated We recommend the following inverter sizes: 100Ah battery: Up to 1200W inverter ...

[Get Price](#)

## Calculate Battery Size For Any Size Inverter (Using Our Calculator)

To recharge your battery from time to time you would need the right size solar panel to do the job! Read the below article to find out the suitable solar panel

size for your battery bank

[Get Price](#)



### What size inverter can I use with my lithium battery?

What size inverter can I use with my lithium battery? Was this article helpful? Have more questions? Submit a request. We recommend the following inverter sizes: 100Ah battery: Up ...

[Get Price](#)

### ExpertPower 12V 50Ah Lithium LiFePO4 Deep Cycle ...

Buy ExpertPower 12V 50Ah Lithium LiFePO4 Deep Cycle Rechargeable Battery , 2500-7000 Life Cycles & 10-Year Lifetime , Built-in ...

[Get Price](#)



### Calculate Battery Size for Inverter Calculator

Estimate the battery capacity required for your inverter based on power load, runtime, and efficiency. Using the Calculate Battery Size for Inverter



Calculator can ...

[Get Price](#)

## What Size Inverter Can I Run Off a 100Ah Battery? A ...

Understanding Battery and Inverter Basics Battery Capacity and Inverter Compatibility A 100Ah battery signifies its capacity to deliver 100 ampere-hours of current. This ...

[Get Price](#)



## How Do You Choose the Right Inverter Size for Your Specific ...

To choose the right inverter size for your specific power needs, first calculate your total power requirements in watts. Multiply the battery capacity (in Ah) by its voltage (typically ...

[Get Price](#)



## How Do I Match My Battery Size to My Inverter?

Matching your battery size to your inverter is essential for ensuring efficient power usage and preventing system overloads. A well-sized battery will

provide adequate energy for your ...

[Get Price](#)



### **What Size Inverter You Need (Calculations + Battery)**

Deep cycle batteries come in either 12V or 6V options, and depending on the type of system and power needed, you could use either size ...

[Get Price](#)

## **Contact Us**

For catalog requests, pricing, or partnerships, please visit:  
<https://www.barkingbubbles.co.za>