

SolarInvert Energy Solutions

What size inverter should I use with a 240A lithium battery



Overview

Note!The battery size will be based on running your inverter at its full capacity
Assumptions 1. Modified sine wave inverter efficiency: 85% 2. Pure sine wave inverter efficiency:90% 3. Lithium Battery:100.

Why should you use the calculate battery size for inverter calculator?

Using the Calculate Battery Size for Inverter Calculator can significantly streamline your power management process. This tool is particularly beneficial in scenarios where precise power estimation is critical, such as designing renewable energy systems, ensuring backup power in off-grid locations, or optimizing battery usage for cost efficiency.

What is the recommended battery size for an inverter?

Interpreting Results: Once you input the required data, the calculator will generate the recommended battery size in ampere-hours (Ah). For instance, if your power consumption is 500 watts, the usage time is 4 hours, and the inverter efficiency is 90%, the calculator might suggest a battery size of approximately 222 Ah.

What voltage should a 12V inverter run on?

The input voltage of the inverter should match the battery voltage. (For example 12v battery for 12v inverter, 24v battery for 24v inverter and 48v battery for 48v inverter Summary What Will An Inverter Run & For How Long?

.

Why do lithium batteries need inverters?

With today's lithium batteries, inverters play a big part due to the energy that a lithium battery can deliver. For lithium batteries that run external BMS systems, the output current restrictions are much less compared to a lithium battery with an internal BMS system.

How much battery do I need to run a 3000-watt inverter?

You would need around 24v 150Ah Lithium or 24v 300Ah Lead-acid Battery to run a 3000-watt inverter for 1 hour at its full capacity Here's a battery size chart for any size inverter with 1 hour of load runtime Note! The input voltage of the inverter should match the battery voltage.

How do I choose a solar inverter?

If you plan to add more batteries or higher AC loads in the future, select a modular inverter and oversize your solar system slightly to accommodate growth. Battery Wh = V × Ah Panel Size (W) = Battery Wh ÷ Sun hours ÷ Efficiency factor Inverter Size (W) = Total Continuous Load + Surge Load Buffer Several websites offer solar sizing calculators.

What size inverter should I use with a 240A lithium battery



Lithium Battery for Inverter: Pros, Specs, and Tips

Part 1. What is a lithium battery for inverter? A lithium battery for inverter is a rechargeable battery that uses lithium-ion technology to store ...

[Get Price](#)

What size inverter can I use with my lithium battery?

What size inverter can I use with my lithium battery? Setec Customer Support 2 years ago Updated We recommend the following inverter sizes: 100Ah battery: Up to 1200W inverter ...



[Get Price](#)



Calculate Battery Size For Any Size Inverter (Using Our Calculator)

To recharge your battery from time to time you would need the right size solar panel to do the job! Read the below article to find out the suitable solar panel size for your battery bank

[Get Price](#)

Determining the Solar and Inverter Size Needed to ...

This guide will walk you through everything you need to know to calculate the optimal Size of your solar and inverter setup to charge batteries ...

[Get Price](#)



What is the max inverter size I can use with a 100Ah lithium battery?

A 1000W to 2000W inverter works well with a 100Ah lithium battery, but power needs, inverter type, and efficiency should be considered. Choosing the right setup ensures ...

[Get Price](#)

Selecting the correct inverter

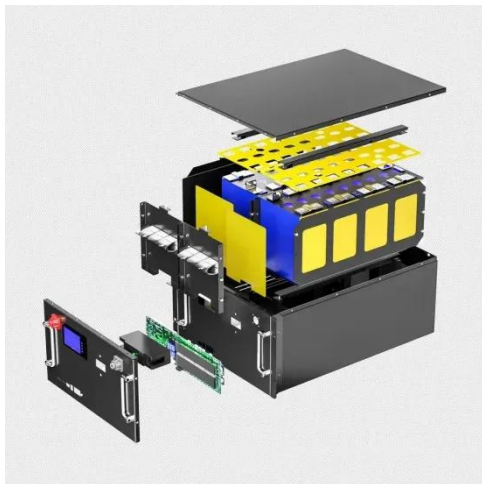
By 'staggering' the operating time of 240V appliances, you can drastically reduce the capacity of your battery/charger/inverter setup. It's sensible to decide on ...

[Get Price](#)



Lithium Batteries: What Size Inverter Can I Use?

Bottom line, if you want to run large inverter loads above 1000w on a lithium battery, make sure you choose an lithium battery that is designed for larger



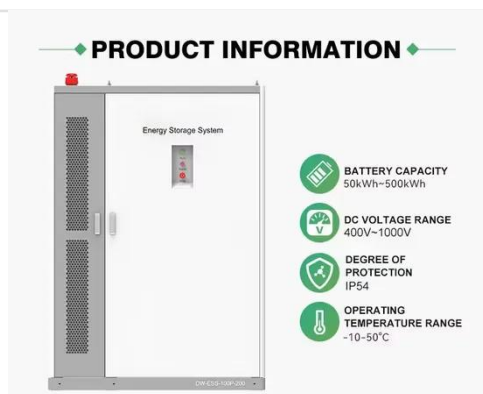
inverters or a system that can be ...

[Get Price](#)

Solar Inverter & Battery Sizing Calculator

In this step, you will verify what will help you choose the correct battery size. The battery size determines how long you can take this load. Most people select a 2-hour backup.

[Get Price](#)



How to Choose the Right Inverter for Lithium Batteries?

Answer: To choose the right inverter for lithium batteries, match the inverter's voltage and capacity to your battery's specifications, prioritize pure sine wave inverters for ...

[Get Price](#)

How Do I Match My Battery Size to My Inverter?

Matching your battery size to your inverter is essential for ensuring efficient power usage and preventing system overloads. A well-sized battery will

provide adequate energy for your ...

[Get Price](#)



Proforma and specifications
for battery storage system

PDF

Solar Inverter & Battery Sizing Calculator

In this step, you will verify what will help you choose the correct battery size. The battery size determines how long you can take this load. ...

[Get Price](#)

What Size Inverter Do I Need for a 200Ah Lithium ...

When determining the appropriate inverter size for a 200Ah lithium battery, several key factors must be considered, including the battery's ...

[Get Price](#)



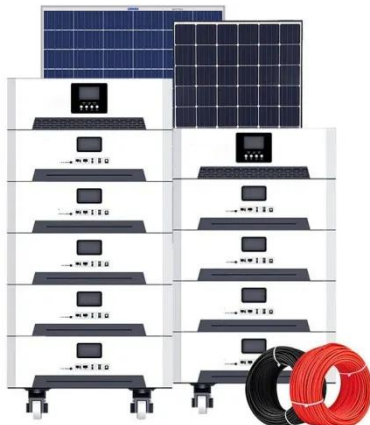
Solar Battery Size Guide: kWh, Inverter & Runtime

2 days ago · Size your solar battery using load profile, critical loads, efficiency and DoD. Calculator matches kWh, inverter and runtime for code-compliant installs.

[Get Price](#)

How Do You Choose the Right Inverter Size for Your Specific ...

Matching the inverter size to a 200Ah lithium battery is crucial for optimal performance and efficiency. An appropriately sized inverter ensures that it can handle the ...

[Get Price](#)

Determining the Solar and Inverter Size Needed to Charge a Battery

This guide will walk you through everything you need to know to calculate the optimal Size of your solar and inverter setup to charge batteries effectively and safely.

[Get Price](#)

What Size Solar Inverter Do I Need? Experts Break It ...

Thinking about going solar? Great move. But before you start soaking up the sun, you'll need the right inverter to match your system. This ...

[Get Price](#)


1500 Watt Inverter: Battery Sizing Guide

How many batteries do I need for a 1500-watt inverter? In short, For 1500 watt inverter you'll need two 12V 100Ah lead-acid batteries connected in ...

[Get Price](#)

Which Battery Capacity Is Best for Inverter

The best battery capacity for your inverter depends on your power needs, but 150Ah to 200Ah is ideal for most homes. Bigger isn't always better--efficiency matters. Many ...

[Get Price](#)


Lithium Batteries: What Size Inverter Can I Use?

Bottom line, if you want to run large inverter loads above 1000w on a lithium battery, make sure you choose an lithium battery that is designed for larger



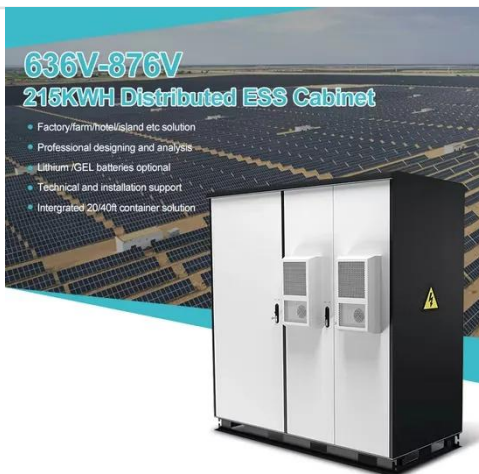
...

[Get Price](#)

Leisure Battery Size Calculator

Calculate the perfect leisure battery size for your campervan. Use our quick Leisure Battery Size Calculator for accurate results tailored to your needs!

[Get Price](#)



What Inverter Size is Best for a 100Ah Battery?

When setting up a solar, off-grid, or backup power system, understanding the compatibility between your battery size and inverter capacity is essential for both performance and safety. A ...

[Get Price](#)

How to Calculate Battery Size for Inverters of Any Size

Learn how to calculate how much battery power you need to get your inverter up and running with The Inverter Store's handy how-to guide. It

works for any size.

[Get Price](#)



The Only Inverter Size Chart You'll Ever Need

We have created a comprehensive inverter size chart to help you select the correct inverter to power your appliances.

[Get Price](#)

Calculate Battery Size for Inverter Calculator

Estimate the battery capacity required for your inverter based on power load, runtime, and efficiency. Using the Calculate Battery Size for Inverter Calculator can ...

[Get Price](#)



What Size Lithium Battery Do I Need to Run a 5000W Inverter?

When it comes to powering a 5000W inverter, selecting the appropriate lithium battery is crucial for achieving optimal performance and reliability. In



this comprehensive guide, we will delve ...

[Get Price](#)

What Battery Cable Size Should I Use?

In our example above, you divide 3,000 watts (the inverter rating) by 12 volts (the battery voltage), giving you a maximum current draw of 250 amps. What ...

[Get Price](#)



Contact Us

For catalog requests, pricing, or partnerships, please visit:
<https://www.barkingbubbles.co.za>