

SolarInvert Energy Solutions

**Which devices are best
connected to the power supply
for base stations**



Overview

What are the components of a base station?

Power Supply: The power source provides the electrical energy to base station elements. It often features auxiliary power supply mechanisms that guarantee operation in case of lost or interrupted electricity, during blackouts. **Baseband Processor:** The baseband processor is responsible for the processing of the digital signals.

Why do we need a base station?

Technological advancements: The New technologies result in evolved base stations that support upgrades and enhancements such as 4G, 5G and beyond, its providing faster speeds with better bandwidth. **Emergency services:** They provide access to emergency services, so that in case of emergency, people can call through their mobile phones.

Why are base stations important in cellular communication?

Base stations are important in the cellular communication as it facilitate seamless communication between mobile devices and the network communication. The demand for efficient data transmission are increased as we are advancing towards new technologies such as 5G and other data intensive applications.

What is a power supply and backup battery system?

Overall, the power supply and backup battery system provide both AC line power and DC battery backup power to ensure the base station remains powered when AC line power is disabled. Figure 4 shows the circuit blocks of the power supply and backup battery system. Figure 4. Power supply and backup battery system block diagram.

How does a base station work?

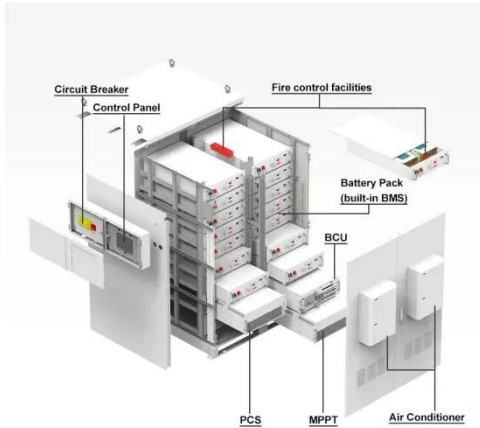
It usually connects the device to other networks or devices through a

dedicated high bandwidth wire of fiber optic connection. Base stations typically have a transceiver, capable of sending and receiving wireless signals; Otherwise if they only send the trailer it will be considered a transmitter or broadcast point only.

What are the different types of base stations?

Some basic types of base stations are as follows: Macro-base stations are tall towers ranging from 50 to 200 feet in height, placed at strategic locations to provide maximum coverage in a given area. Those are equipped with large towers and antennas that transmit and receive radio signals from wireless devices.

Which devices are best connected to the power supply for base station



Should I Keep My Base Stations Plugged In: Unveiling the Pros ...

In our modern society, where reliance on technology is paramount, base stations have become an indispensable part of our daily lives. However, the question arises as to ...

[Get Price](#)

The power supply design considerations for 5G base stations

To understand how, consider the power amplifier (PA) and power supply unit (PSU) in the 5G New Radio (NR) gNodeB base station. In 2G, 3G and 4G, the PA and PSU were ...



[Get Price](#)



Base Stations

The present-day tele-space is incomplete without the base stations as these constitute an important part of the modern-day scheme of wireless communications. They are ...

[Get Price](#)

base transceiver station components

A Base Transceiver Station (BTS) is a fundamental component of a mobile cellular network, responsible for establishing a communication link ...

[Get Price](#)



Base Stations

The present-day tele-space is incomplete without the base stations as these constitute an important part of the modern-day scheme of wireless ...

[Get Price](#)



LoRaWAN Base Station: Your Ultimate Guide to Long ...

Among LPWAN technologies, LoRaWAN stands out due to its robustness and flexibility. LoRaWAN enables long-distance communication between low ...

[Get Price](#)



Power supplies for 5G base stations

When power requirements are greater than 1000W, the UHP-1500/2500 series are suitable for these base stations. Station manufacturers ...

[Get Price](#)



The power supply design considerations for 5G base ...

To understand how, consider the power amplifier (PA) and power supply unit (PSU) in the 5G New Radio (NR) gNodeB base station. In 2G, 3G ...

[Get Price](#)



Power Supply Solutions for Wireless Base Stations Applications

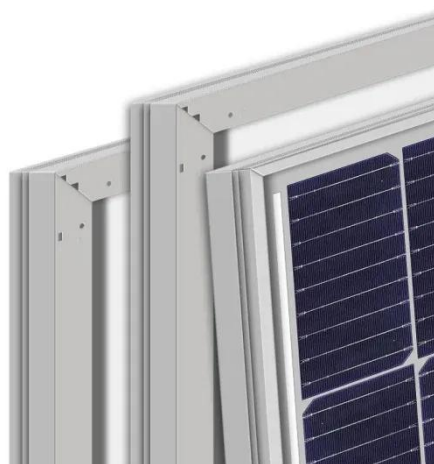
Power supplies can be employed in each of the three systems that compose wireless base stations. These three systems are known as the environmental monitoring system, the data ...

[Get Price](#)

Types of Base Stations

Base stations are one of the widely used components in the field of wireless communication and networks. It is an access point or base point of a ...

[Get Price](#)



A Beginner's Guide to Understanding Telecom Power ...

Its primary purpose is to ensure a consistent and reliable energy source for devices like routers, switches, and base stations. Unlike standard ...

[Get Price](#)


An Introduction to 5G and How MPS Products Can Optimize ...

The AAU consists of a series of power supply devices to ensure that all signals are received, processed, and transmitted. For the receivers and transmitters, it is vital to have a powerful ...

[Get Price](#)

114KWh ESS



Base Stations and Cell Towers: The Pillars of Mobile ...

Base stations and cell towers are critical components of cellular communication systems, serving as the infrastructure that supports seamless ...

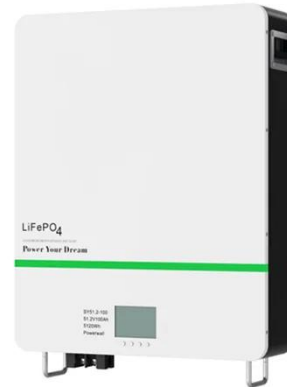
[Get Price](#)

Basestation

A base station (BS) is defined as a fixed communication facility that manages radio resources for one or more base transceiver stations (BTSs), facilitating

radio channel setup, frequency ...

[Get Price](#)



The Best Portable Power Stations

Power output of a portable power supply station refers to the maximum amount of energy the station delivers to the attached devices. ...

[Get Price](#)

5G macro base station power supply design strategy and ...

For macro base stations, Cheng Wentao of Infineon gave some suggestions on the optimization of primary and secondary power supplies. "In terms of primary power supply, we ...

[Get Price](#)



What is a Base Station?

The electromagnetic waves emitted by base stations and mobile phones are like air, filling us all around. Everyone knows mobile phones, ...

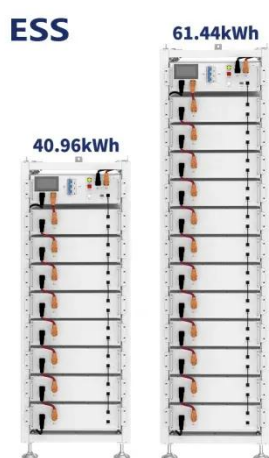
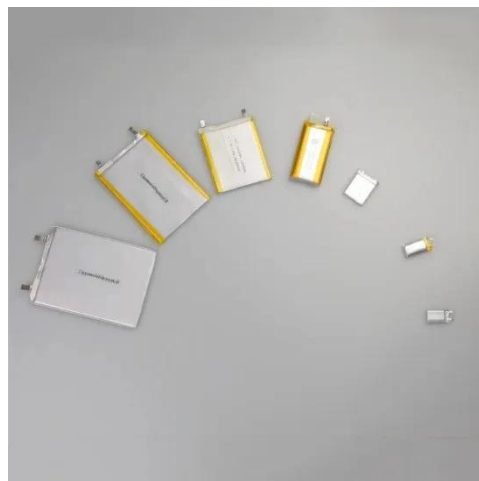
[Get Price](#)



Breaking Down Base Stations - A Guide to Cellular Sites

Every day, billions of people use their phones and devices to connect to each other around the globe. This is made possible by cellular ...

[Get Price](#)



Selecting the Right Supplies for Powering 5G Base Stations

These tools simplify the task of selecting the right power management solutions for these devices and, thereby, provide an optimal power solution for 5G base stations components.

[Get Price](#)

Cell Phone Towers -- EITC

Cell tower sites and mobile devices manipulate the frequencies so that they can use low-power transmitters to supply their services with the least possible interference. ...

[Get Price](#)



Designing to Protect 5G Macro Base Stations for High ...

In this article, learn about protecting three major base station systems, the baseband unit, the power supply, and the backup battery system.

[Get Price](#)

10 Best Portable Power Stations for Camping in 2025

Finding the best portable power station for camping makes outdoor adventures easier. A good power source keeps your devices charged ...

[Get Price](#)

The 9 Best Portable Power Stations of 2025

The best portable power stations provide reliable electricity wherever it's required, including the outlets and ports your devices need. We ...

[Get Price](#)

Selecting the Right Supplies for Powering 5G Base Stations

These tools simplify the task of selecting the right power management solutions for these devices and, thereby, provide an optimal power solution for 5G base

stations components.

[Get Price](#)



Power supplies for 5G base stations

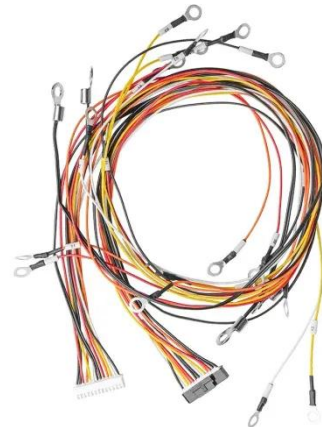
When power requirements are greater than 1000W, the UHP-1500/2500 series are suitable for these base stations. Station manufacturers only need to install the supplied power ...

[Get Price](#)

Building better power supplies for 5G base stations

Building better power supplies for 5G base stations Authored by: Alessandro Pevere, and Francesco Di Domenico, both at Infineon Technologies Infineon Technologies - Technical ...

[Get Price](#)



Selecting the Right Supplies for Powering 5G Base Stations ...

These tools simplify the task of selecting the right power management solutions for these devices and, thereby, provide an optimal power solution for 5G base



stations components.

[Get Price](#)

A Beginner's Guide to Understanding Telecom Power Supply ...

Its primary purpose is to ensure a consistent and reliable energy source for devices like routers, switches, and base stations. Unlike standard power systems, telecom ...

[Get Price](#)



Deye Official Store

10 years
warranty

Contact Us

For catalog requests, pricing, or partnerships, please visit:
<https://www.barkingbubbles.co.za>